



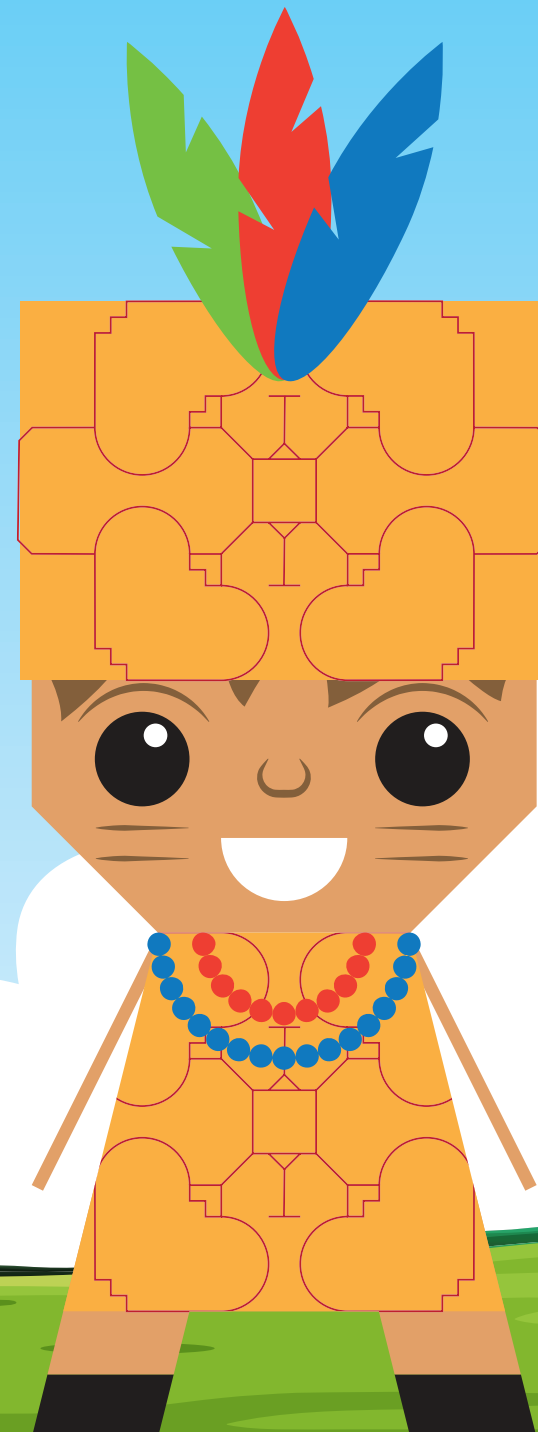
Assembling Paper Toy

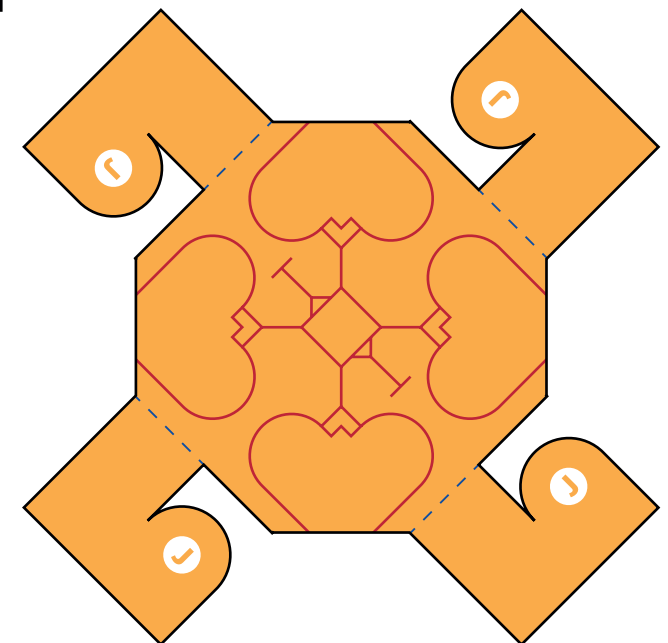
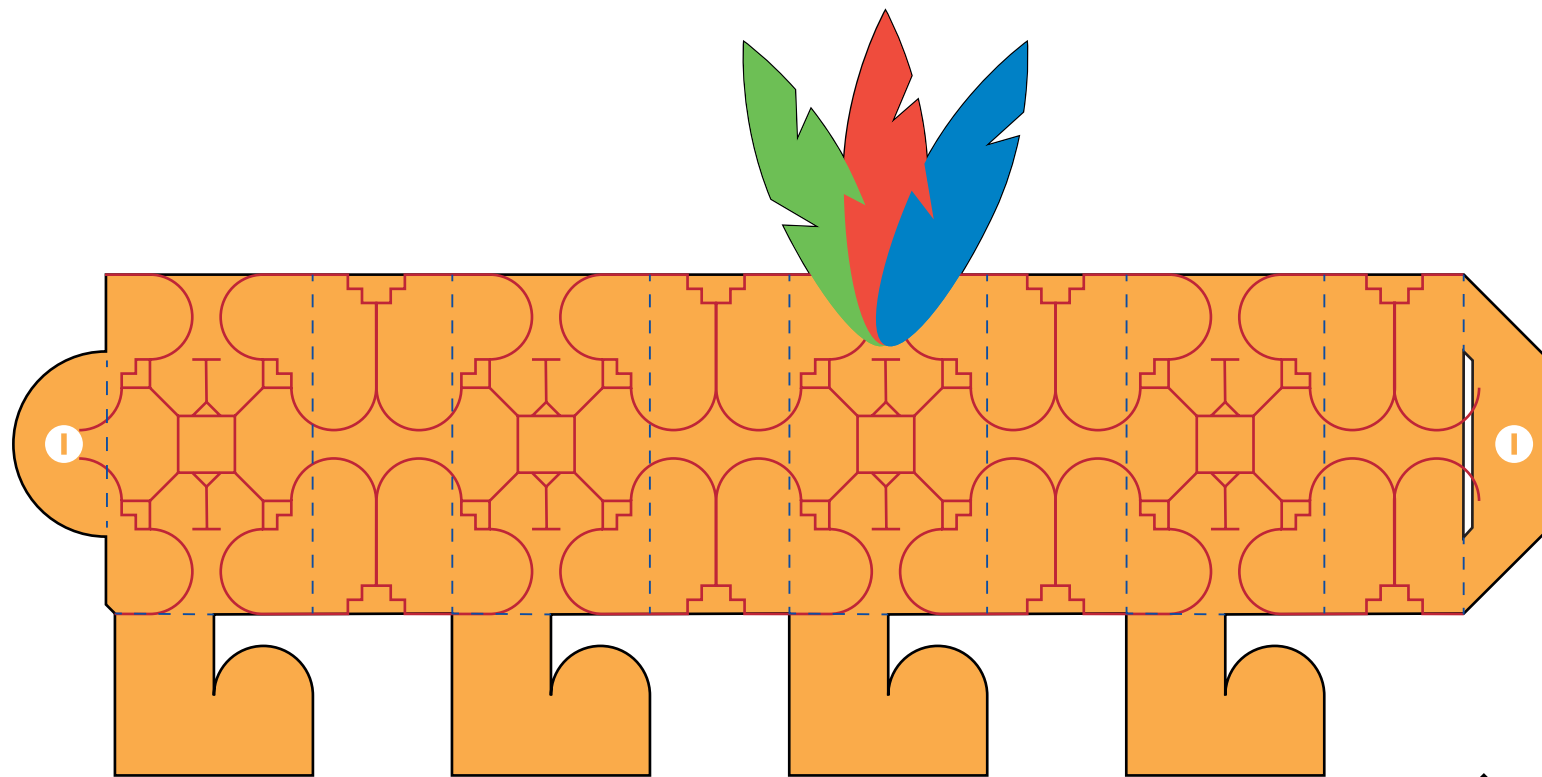
Shipibo-conibo



Crossing winding rivers and dense forests, Chasqui arrives to a community that lives in harmony with nature, and a shipibo-conibo talks to him about how the world is connected to design, the kené.

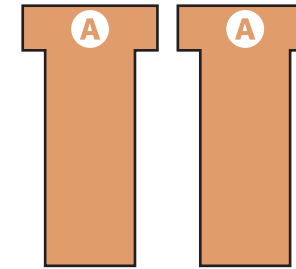
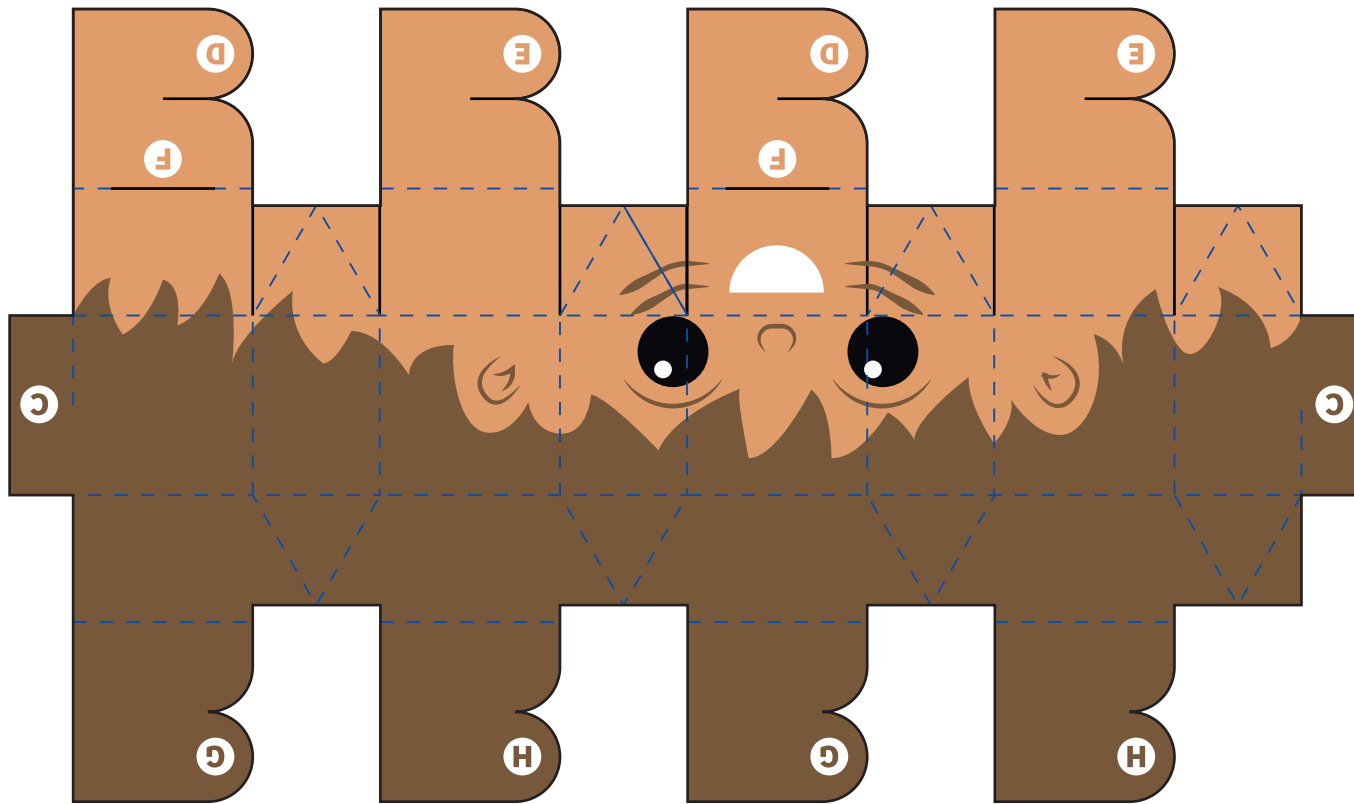
Shipibo-conibo instructions:

- 1) Insert the arms into the body. (Join "A")
- 2) Assemble the body. (Join "B")
- 3) Assemble the lower part of the head in order. (Join "C", "D" y "E")
- 4) Insert the body. (Join "F")
- 5) Assemble the upper part of the head in order (Join "G" y "H")
- 6) Assemble the hat. (Join "I" y "J")





LEGEND	
	Trim Line
	Bend line



LEGEND	
	Trim Line
	Bend line

